

## Welcome to the amazing Chaperones!

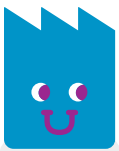
Thank you for taking the time to help make your group's visit into a Wonder-filled experience! It is because of amazing chaperones like you that this experience is possible.

### Explore, learn, create... **PLAY!**

Our museum is designed to support intergenerational play and independent discovery. We are a safe space for children of all backgrounds and abilities to explore, experiment, and interact with the natural and built world.

### Extend, support, engage... **PLAY!**

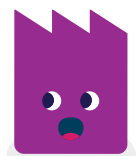
The role of the chaperone is to be involved, invested and present. We encourage chaperones to play and share in children's discoveries. Using open ended questions are a great way to extend their creative thinking, support their exploration, and engage with their play.



#### Are you coming for a Discovery Visit?

When you arrive at the museum, gather your group in the lobby and we will guide you and your group into the museum. If you are attending the museum with a single class, we will lead your class to the Classroom for the 45- minute facilitation time, which will be followed by time for you and your group to explore the museum. If you are with two classes, one class will experience the Facilitated portion of their visit at the beginning of their visit, and the second class will have their Facilitated time towards the end of their visit. At the end of your visit, all students and chaperones will gather in the classroom to prepare for departure.

#### Are you coming for a Exploration Visit?



When you arrive at the museum, gather your group in the lobby before entering the museum. Once your group is complete, you can check-in to pay and enter the museum as a group. This visit does not have a facilitated portion but you are required to have the 6:1 ratio of children to adults. Once your large group has entered the museum, you and your small groups are welcome to play, explore, create and engage with all that Nutrien Wonderhub has to offer.

Teacher Name: \_\_\_\_\_ Chaperone Name: \_\_\_\_\_

# Visit Planner

Date: \_\_\_\_\_

**Bus Departs School:** \_\_\_\_\_

Facilitated Time (Classroom): \_\_\_\_\_

Exploration Time (Museum):

**Time to Go (Classroom):**

### My Group of Wonderers:

1. \_\_\_\_\_
2. \_\_\_\_\_
3. \_\_\_\_\_
4. \_\_\_\_\_
5. \_\_\_\_\_
6. \_\_\_\_\_

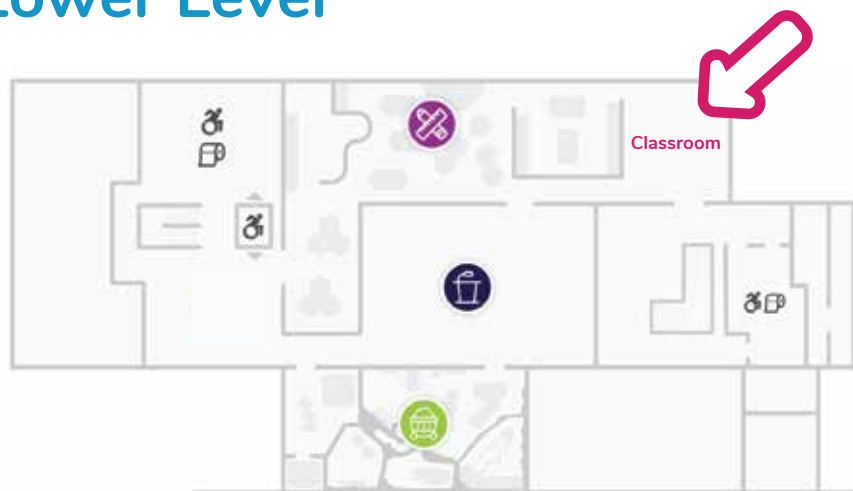
## Exhibits that Explore our Visit Topic:

1. \_\_\_\_\_
2. \_\_\_\_\_
3. \_\_\_\_\_
4. \_\_\_\_\_
5. \_\_\_\_\_
6. \_\_\_\_\_

## Engaging Questions:

1. What did you notice?
2. How did you make it do that?
3. What could you change?
4. What does it remind you of?

## Lower Level



## Main Level



# What will you discover today?

