

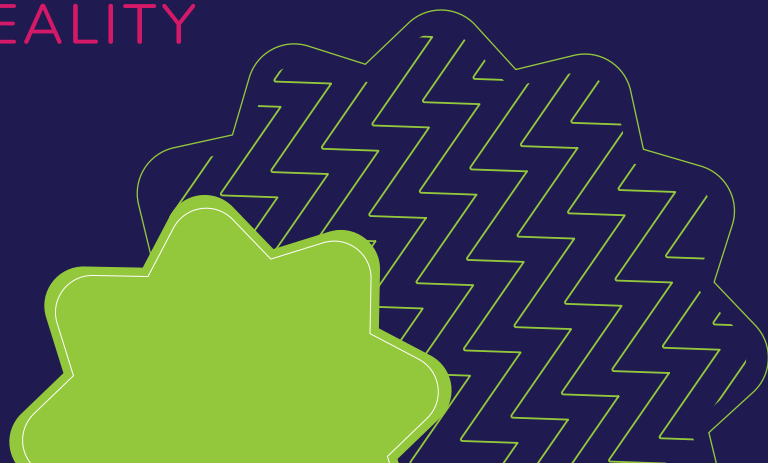


NUTRIEN WONDERHUB



FROM VISION TO REALITY

A story





THE VISION



What
will you
discover
today?



THE DREAM



In 2014, the City of Saskatoon, a collection of community members and educators, and the board of the small but mighty Children's Discovery Museum came together in a vision. They dreamed of a facility that would revolutionize how we think about child development in Saskatchewan. They envisioned an artful space that would draw visitors from near and far into an elevated play experience that would not only immerse children and their adults into experiential learning activities but also become integral to the cultural fabric of Saskatchewan. Visitors to this unparalleled facility would leave transformed and more connected than ever with their families, the community, and the world. This vision was realized in Nutrien Wonderhub.

The final design for the facility was produced by Argyle Designs based in Brooklyn, New York. An industry leader in exhibit design, this company transformed the vision of Wonderhub from its humble beginnings into a larger-than-life reality. In tireless consultation with wonderfounders*, the design team collaborated with local fabricators and engineers to create a space that reflected the dignity of local culture while holding international appeal.

THE DESIGN



Wonderfounder*

/wəndər'foundər/
noun

A parent, community member, educator, or volunteer who was instrumental in transforming the vision for Nutrien Wonderhub into a reality.

THE TEAM

Wonderhub is truly a feat of international collaboration. From its design team in New York to a team of local architects, the facility owes its world-class construction to the following:

- Argyle Design, Brooklyn, NY | Exhibit Designers
- Heartland Scenic Studio, Omaha, NE | Exhibit Fabricator
- Expographiq, Gatineau, QC | Exhibit Fabricator
- Kindrachuk Agrey Architecture, Saskatoon, SK | Architecture
- Strata Development, Saskatoon, SK | Site Construction Management
- Toshiko Horiuchi MacAdam, Interplay Design & Manufacturing, Halifax, NS | Artist for Cosmic Commotion
- Mindsplash, Naperville, IL | Fabricator for Amazing Airways



OUR WONDERFOUNDERS

Today and every day, Wonderhub honours its commitment to its founding visionaries in delivering relevant, exploratory, and inclusive programming to the people of Saskatchewan and beyond. The facility is an independent, charitable, non-profit and is able to work towards its mission thanks to the generous support of many community members, businesses and individuals.

We recognize some of our capital donors on our permanent donor wall located at the entrance of the facility. For a little fun on your next visit, try to get the colors to change on the wall! Just like everything else in our museum, our donor wall is fun and interactive!



THE REALIZATION



With a stamp of approval from local families, Wonderhub opened its doors at the historic Mendel building on June 28, 2019. From its home on the banks of the South Saskatchewan River, the newly-renovated facility emerged as a state-of-the-art attraction where families now gather to nurture creativity and curiosity and to foster a lifelong love of learning. Wonderhub has achieved this through the careful design of hands-on, open-ended, engaging exhibits that are both meaningful to the current moment and that have the potential to evolve.

A walk through the museum reveals a space of flowing, natural beauty that is comfortable, exciting, and welcoming of people of all interests and abilities. From the ethereal northern lights that grace the heights of the facility's main gallery to the fan-favourite, whimsical fiber-art climbing structure, a journeyer through Wonderhub will discover nooks for high-energy activity and crannies for quiet, thoughtful play. In the stunning, riverview Create Space, one might find a child deeply immersed in an inspirational craft while in the Discovery Mine, one could expect to encounter an industrious child in the throes of operating heavy machinery. The diverse exhibits invite passersby into endless possibilities to explore the weird and wonderful ways in which science, art, technology, and culture interact.





THE EXHIBITS



NORTHERN LIGHTS

THE BIG IDEA

Tawâw, Bienvenue, and Welcome to Nutrien Wonderhub. The Northern Lights exhibit is the crowning glory of the facility's main gallery, and immediately connects visitors to the natural wonders and culture of Saskatchewan's north. It draws them organically from Wonderhub's welcome area into the promise of wonder-full experiences to come. This exhibit honours the artistic legacy of the Mendel building and was realized in theatrically lit ribbon that takes on the unique, ethereal quality of the aurora borealis. Here, eyes and hopes are drawn upwards towards the lights which are both steady and constantly changing, setting the stage for the wonder-making experiences to come.



INVITATIONS TO INTERACT:

- Run your fingers over the sensory control-table, and watch the lights sing and dance in response
- Open conversations about the aurora borealis - *a natural phenomena in Saskatchewan's own backyard*
- Tuck some inspiration in your pocket for an aurora borealis themed craft later in the visit
- **Saskatchewan Curricular Objective:** *Explore features of their natural surroundings.*
- **Saskatchewan Curricular Objective:** *Examine the effects of physical forces, magnetic forces, light energy, sound energy, and heat energy on objects in the environment.*



Experiential Qualities:

fantastical | whole-picture thinking | wonder-making | surprising | imaginative

TOON TOWN

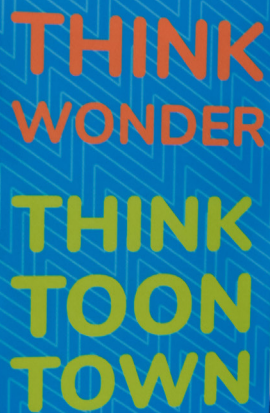
THE BIG IDEA

Welcome to Toon Town! This changeable prairie townscape cleverly incorporates elements of real Saskatchewan landmarks, while leaving facades completely flexible and open to change. The exhibit pays homage to life in Saskatchewan's many towns and villages. Visitors might fancy themselves the town veterinarian one day and a weather forecaster the next. The space invites free, imaginative exploration of kid-sized restaurants, theatres, schools, vehicles, and shops of all shapes and sizes. With props galore and unlimited ways to interact with them, Toon Town is the perfect space for any industrious child and offers kids the opportunity to discover a new 'script' or 'prompt' each and every time they return.



INVITATIONS TO INTERACT:

- Perform or watch a 'production' in Toon Town's Theatre which comes complete with costumes and props
- Sort, scramble, repeat using any of Toon Town's household props
- Explore and understand everyday items and places in safe, accessible, and creative ways
- **Saskatchewan Curricular Objective:**
Explore a variety of drama strategies: role-play, imagining, and parallel play.
- **Saskatchewan Curricular Objective:**
Investigate observable characteristics of familiar objects and materials in their environment.



THINK
WONDER
THINK
TOON
TOWN

Experiential Qualities:

collaborative | immersive | pretend-play | spontaneous | theatrical

LITTLE BRIDGES

THE BIG IDEA

One of the visions for Wonderhub from its inception was to become a space that was both functional and beautiful. That vision has become a reality in Wonderhub's Little Bridges exhibit. This area houses large river-facing windows and a generous mix of activities to engage the budding gross and fine motor skills of Wonderhub's youngest learners. The exhibit is all about building connections and is designed to pay tribute to the ways in which bridges contribute to the cultural fabric of Saskatchewan.

The artful design flows from the soft pool area which is designed especially for babies to crawling tunnels for early movers and then into spaces for walkers including a sensory walk bridge, train table, and bridge climber. The space includes a mural of original art from Mackenzie May Dupre, a renowned artist from Prince Albert, that has been transformed into an interactive Wonder Wall. And thanks to the bank of windows installed during the renovation of the Mendel, Little Bridges is also a place where parents can relax in natural lighting in view of the South Saskatchewan River and restore their energy to face another day at this extra-demanding phase of their lives!



INVITATIONS TO INTERACT:

- Enjoy tummy-time, rolling, and stargazing in the soft pool
- Crawl, scoot, or slither through crawling tunnels
- Delight in the weird and wonderful sounds of animals at Little Bridge's Wonderwall
- Experience the satisfaction of the cause-effect relationship when a peg lights up as it is successfully pushed into the exhibit's light-bright wall
- Hoist yourself onto two feet on the train table and then touch, feel, and place props
- Engage your senses on the sensory bridge with hands-on experiences of light, sound, and texture

Experiential Qualities:

multi-sensory | discovery | happy | secure | active | safe

NORTH WOODS & GATHERING PLACE

THE BIG IDEA

Storytelling is at the heart of Wonderhub’s vision for its North Woods and Gathering Place exhibits. Here, groups can gather for cultural stories and other focused activities alongside a moving backdrop of Saskatchewan’s natural scenery. Real footage of a variety of Saskatchewan landscapes is projected onto the exhibit’s curved back wall giving visitors the illusion of being nestled into the quiet of nature. Adding to the ambiance of the exhibit is a flat-bottom boat and an interactive campfire. The campfire is the anchor of any group in the Gathering Place and the space where, we know, all the best stories are told.



INVITATIONS TO INTERACT:

- Gather to hear stories and legends from around Saskatchewan and around the world
- Share knowledge about other cultures through group activities
- Role-play in a natural setting with nature-themed prompts and props
- **Saskatchewan Curricular Objective:** Build and describe 3-D objects.
- **Saskatchewan Curricular Objective:** Identify what good viewers, listeners, readers, representers, speakers, and writers do.



Experiential Qualities:

calm | focused | togetherness | connection

BOXES O' FUN

THE BIG IDEA

Curated sensory experiences are the name of the game at Wonderhub's Boxes o' Fun exhibit. Each of the three static exhibits targets a specific sense and is designed to produce highly engaging and surprising experiences for kids. The sonic box provides a satisfying opportunity to produce a symphony of sounds, the softbox challenges visitors to experiment with their sense of touch and includes a fan-favourite floor-to-ceiling wall of pegs, while the media recording box allows visitors to explore visual effects in media using a green screen. The fourth box is flexible and houses everything from seasonal photo ops to science-themed magnetic activities to black light experiences.



INVITATIONS TO INTERACT:

- Learn by engaging a specific sense through targeted activities in each box
- Investigate principles of STEAM (*science, technology, engineering, art, and math*) as they present themselves in each box
- Explore cause/effect relationships as they relate to individual senses
- **Saskatchewan Curricular Objective:** Investigate the characteristics of contact (*ie. push, pull, and friction*) and non-contact (*ie. magnetic and static electric*) forces.
- **Saskatchewan Curricular Objective:** Explore how humans and animals use their senses to interact with their environment.



Experiential Qualities:

surprising | sensory | experimental | playful

COSMIC COMMOTION

THE BIG IDEA

Cosmic Commotion is Wonderhub's museum artistic centrepiece and completely succeeds in its mission to lend some wow-factor to the facility! Designed by internationally-acclaimed artist, Toshiko Horiuchi MacAdam, this colourful piece of nylon fibre art has been hand dyed and crocheted to create a masterpiece that hangs from the ceiling in a whimsical display of colour, shape, and texture and embodies Wonderhub's vision of being functional but beautiful. Cosmic Commotion offers visitors the chance to climb, hide, swing, and, in all other ways, experience a piece of art. And this piece is for EVERYONE. Children and their adults can climb inside the Cosmic Commotion, swing on its teardrop suspensions, lay under it, or sit and bounce using the exhibit's floor accessories. It's never quiet at the Cosmic Commotion exhibit, and visitors rarely leave without a picture or two of this one-of-a-kind display.



INVITATIONS TO INTERACT:

- Use gross-motor skills to climb, grip, and grapple to the top of the 'web'
- Take risks to explore nooks and crannies of the Cosmic Commotion
- Experience changing points of view being in, on, and under the display
- **Saskatchewan Curricular Objective:** Build a repertoire of strategies, with guidance, for developing components of health-related fitness, including cardiovascular endurance, flexibility, muscular endurance, and muscular strength.
- **Saskatchewan Curricular Objective:** Describe the spatial relationships among people, place, and environments.



Experiential Qualities:

challenging | child-led | risk-taking | exciting | physical

AIRWAYS

THE BIG IDEA

Wonderhub's Airways exhibit stokes curiosity in a way that is both visually appealing and scientifically interesting. Visitors are able to set the laws of physics into motion as they manipulate colourful scarves and pompoms into pneumatic tubes where they are forced through a spectacular maze of twists and turns until they are launched back to earth in a spectacular yet gentle poof. Visitors observing from below can use a series of levers to alter the objects paths and move to and fro in an attempt to predict the trajectory and catch the falling item.



INVITATIONS TO INTERACT:

- Manipulate the crank and paddle to explore different paths through the tubes
- Try and fail + try and succeed in catching the launched pom poms and scarves as they fall
- Predict changes in path and trajectory based on manipulations to apparatus
- **Saskatchewan Curricular Objective:** Analyze the effects of gravitational, magnetic, and mechanical forces including friction on the movement of objects.
- **Saskatchewan Curricular Objective:** Saskatchewan Curricular Objective: Examine the effects of physical forces, magnetic forces, light energy, sound energy, and heat energy on objects in their environment.



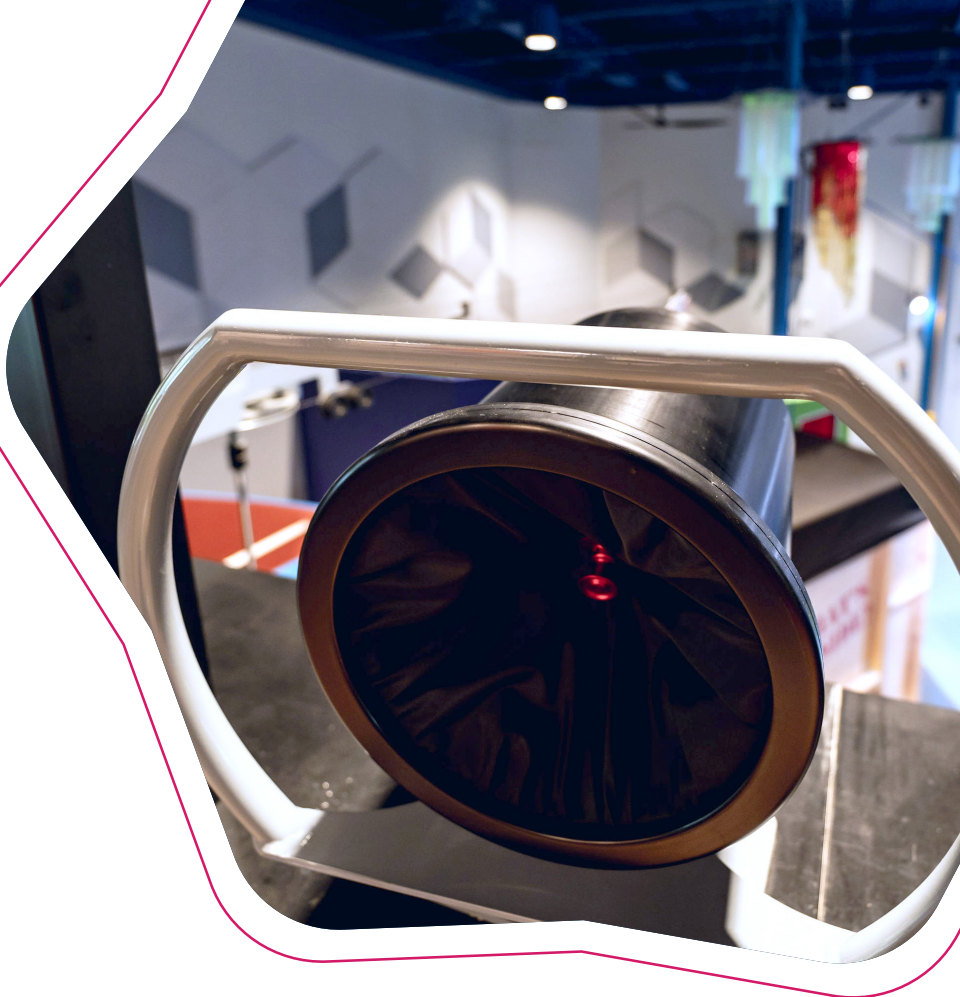
Experiential Qualities:

wonder-making | sensory | eclectic | curiosity | excitement

BLAST OFF

THE BIG IDEA

3 - 2 - 1, BLAST OFF! Wonderhub's STEM Exhibit challenges visitors to explore the laws of physics in real time. One feature demands that visitors line up pressurized air cannons to see if they can 'hit' the targets strung from the ceiling. Another allows children and their adults to fly spaceships high above the heads of those in the North Gallery, with the help of hand cranks. True to Wonderhub's founding values, this exhibit is the embodiment of natural curiosity and child-centricity.



INVITATIONS TO INTERACT:

- Experiment with different angles and pressures to achieve the trajectory that will 'hit' the target
- Manipulate hand cranks and explore the cause/effect relationship on the spaceship
- Explore the relationship between movement and sound.
- **Saskatchewan Curricular Objective:** Investigate the characteristics of simple machines including levers, wheels and axles, pulleys, inclined planes, screws, and wedges.
- **Saskatchewan Curricular Objective:** Analyze methods of determining the position of objects relative to other objects.



Experiential Qualities:

unexpected | curiosity | STEM | tactile

SPOTLIGHT EXHIBIT

THE BIG IDEA

Wonderhub's Spotlight Exhibit is a reflection of the founding visionaries' commitment to providing sustainable, outward reaching, and ever-changing exhibits and programming at the facility. The exhibit invites temporary exhibits from community, industry, or global partners showcasing new and exciting manipulatives and seasonal or time-sensitive displays that help connect wonderhubbers to the outside world.



INVITATIONS TO INTERACT:

- Dictated by exhibit

Experiential Qualities:

changing | flexible | community-building

CREATE SPACE & WORKSHOP

THE BIG IDEA

When the Wonderfounders put their heads together to generate a vision for Create Space, they saw a bright, task-focused place where inventors, visionaries, creators, and crafters could work independently or collaboratively in pursuit of one goal--open-ended creation. Whether one is working to construct a prototype popsicle bridge, build a successful ball run, or make the northern lights come to life in watercolor, this exhibit's spacious design inspires the very essence of creativity. With specialized work tables, access to well-organized materials, and an on-exhibit facilitator, Create Space provides both creative prompts and space to, truly, let dreams soar. In the dedicated Workshop, Wonderhub hosts programs for participants to have access to higher level learning using 3D printers, laser cutters, wood burner tools and soldering irons.



INVITATIONS TO INTERACT:

- Explore building and creating techniques in a variety of mediums (clay, paint, printing, drawing, wood, plastics)
- Craft solutions to inquiry-driven problems (ie. create a structure for the ball to get from Point A to Point B)
- Let the wonder-full experiences of Wonderhub inspire an artful creation
- **Saskatchewan Curricular Objective:** *Examine methods of altering and combining materials to create objects that meet student and/or teacher-specified criteria.*
- **Saskatchewan Curricular Objective:** *Create visual artworks that express ideas about the natural, constructed, and imagined environments.*



Experiential Qualities:

creative | open-ended | artful | industrious | inquiry-drivers | inventive

DISCOVERY MINE

THE BIG IDEA

Wonderhub's Discovery Mine is designed to be an immersive experience into the Saskatchewan potash industry. It is a place where families can not only engage all senses into the experience of life underground but also make personal connections to loved ones who may work in the field. After gearing up in hard hats, vests, and headlamps, aspiring geologists, engineers, and machine operators descend 1 Km "below ground" where they enter an intriguing world of undulating rock faces and some seriously heavy equipment!

In one corner of the exhibit, the borer chugs and whines as it excavates a rock face dumping its contents onto a conveyor operated by eager 'workers' who collect and carry the precious ore. In another, geologists examine raw material under a microscope while machine operators drive through a mine experience and mechanics repair the scale model service truck. Both of the vehicles in the mine were made locally by Prairie Machine & Parts to be miniature replicas of actual electric mine vehicles. The Discovery Mine is a true treasure. It is a diverse collection of one-of-a-kind experiences that reflect a unique part of Saskatchewan culture.



INVITATIONS TO INTERACT:

- Open conversations about the mining industry in Saskatchewan
- Keep the scale model service truck in working order by changing tires and batteries
- Let your imagination take you to the depths of the earth as you live a day in the life of a potash worker
- **Saskatchewan Curricular Objective:** Investigate physical properties of rocks and minerals including those found in the local environment.
- **Saskatchewan Curricular Objective:** Assess how uses of rock and minerals impact self, society, and the environment.

Experiential Qualities:

investigative | discovery | immersive | industrious | mechanical

PERFORMANCE HALL

THE BIG IDEA

The visionaries for Wonderhub's Performance Hall recognized that an important part of child development is observation. This black box-style theatre hosts productions for eager Wonderhub audiences in dance, art, drama, and storytelling and doubles as a flex space for temporary exhibits or private event rentals. With professional lighting and sound, a stage and curtains, the Performance Hall is the perfect place for community and cultural partners to showcase their areas of expertise and to connect it with the world.



INVITATIONS TO INTERACT:

- Be wowed by a cultural or community performance
- Connect with themes, ideas, characters, plots, and performers that are familiar or that transport you to new places
- Experience the journey of emotions elicited by an artistic or cultural performance
- **Saskatchewan Curricular Objective:** Enter into the fiction provided by the drama.
- **Saskatchewan Curricular Objective:** Investigate a variety of formal and informal patterns in art works and the environment.



Experiential Qualities:

Open-ended | multi-purpose | observation | artistic

